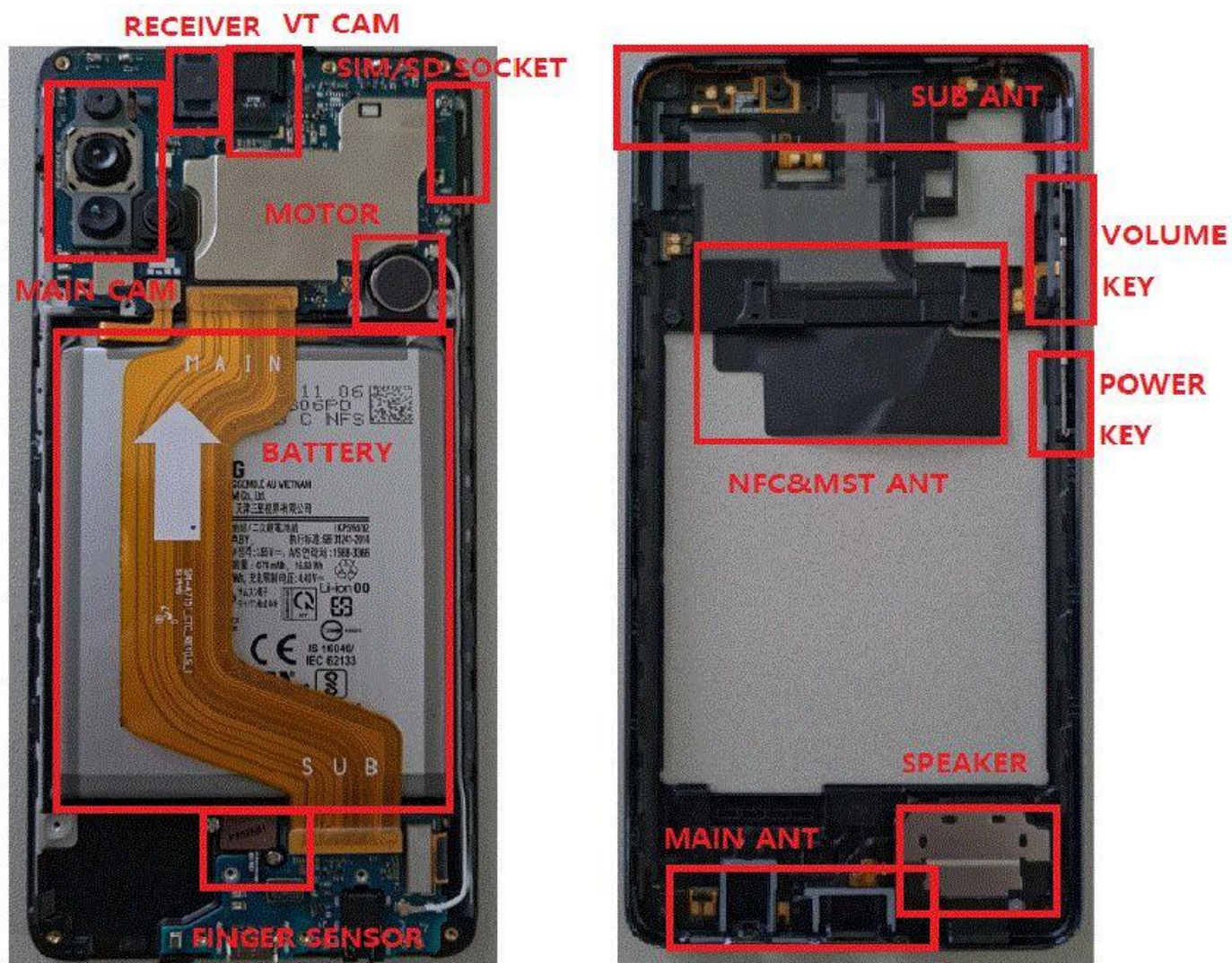


---

## 7. Level 2 Repair

---

### 7-1. Components on the Rear Case



---

## 7. Level 2 Repair


---

### 7-2. Pre-requisite

	
<b>Tweezers / Disass'y Stick / Screw Driver</b>	<b>Anti-static Gloves</b>
	
<b>Anti-static Mat</b>	<b>AOD</b>
	
<b>Ethyl Alcohol</b>	<b>Cotton Swab</b>

## 7. Level 2 Repair

### 7-3. Parts which must be changed after repair

BOM description & part code	Image	Remarks
<b>Backglass Outside tape</b> <a href="#">[GH02-20352A]</a>		<b>Left items must be changed to the new one in case of disassemble the Back glass</b>



## 7. Level 2 Repair

### 7-4. Disassembly

1

- 1) Put the device in the AOD jig.  
Set the AOD condition  
- SOC 68%↓: Upper 70 °C/ Lower 60 °C  
5min  
- SOC 68%↑: Upper 60 °C/ Lower 60 °C  
5min  
2) Disassemble the Backglass using the AOD.



2

- Disassemble SIM Tray from device.  
Unscrew 14Points.  
Screw insertion 2 Point.  
\* Torque Value : 1.25kgf



※ Caution

Be careful not to damage set and OCTA.

※ Caution

Be care of scratch and molding damage.

3

- Disassemble the REAR from Front Assy.



4

1. Disassemble Connector 3ea from PBA.
2. Unscrew 1 Points from PBA.
3. Disassemble Coaxial Cable 1ea from PBA.

Screw insertion 1 Point.  
\* Torque Value : 0.95kgf



※ Caution

Be care of damage to components.

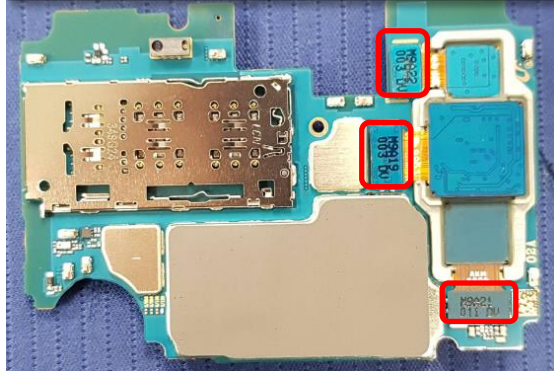
※ Caution

Be careful not to damage the PBA.

## 7. Level 2 Repair

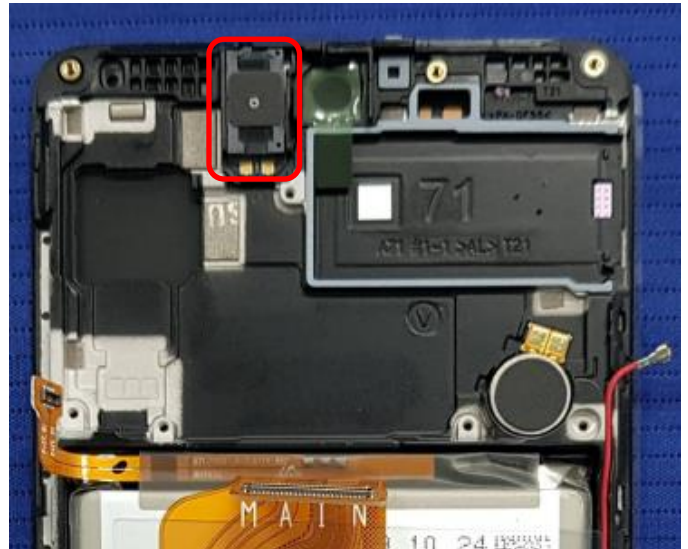
5

1. Disassemble PBA Assy from Front Assy.
2. Disassemble Front /Rear Camera from PBA



6

Detach RCV using pinset from Front Ass'y.



※ Caution

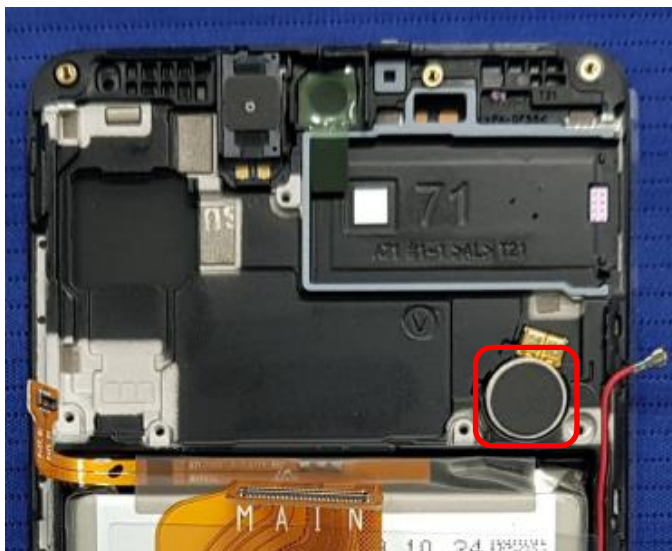
Be careful not to damage the PBA.

※ Caution

Be careful not to damage the RCV.

7

Detach Motor using pinset from Front Ass'y.



※ Caution

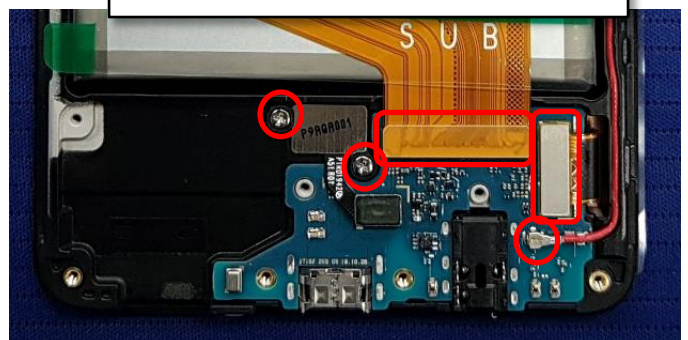
Be careful not to damage the Motor.

8

Remove FPCB 2ea and Fingersensor fix screw 2ea+Fingersensor FPCB and RF Cable 1ea

Screw insertion 2 Point.

\* Torque Value : 0.95kgf



※ Caution

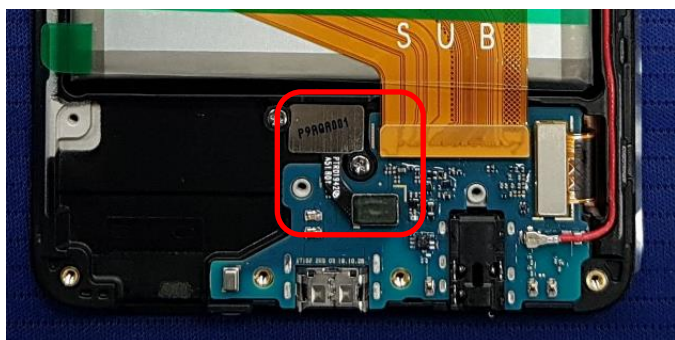
Be careful not to damage the Sub PBA and connector



## 7. Level 2 Repair

9

Detach Finger sensor.

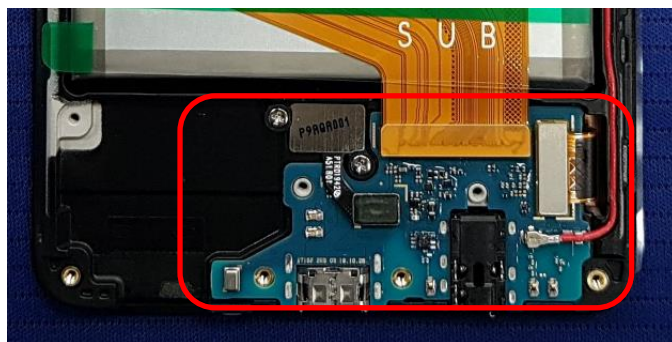


※ **Caution**

Be careful not to damage fingersensor and the Sub PBA.

10

Detach Sub PBA



※ **Caution**

Be careful not to damage HB PBA and the Sub PBA.

11

Detach SPK from Rear Ass'y



※ **Caution**

Be careful not to damage the SPK.

## 7. Level 2 Repair

### 7-5. Assembly

1

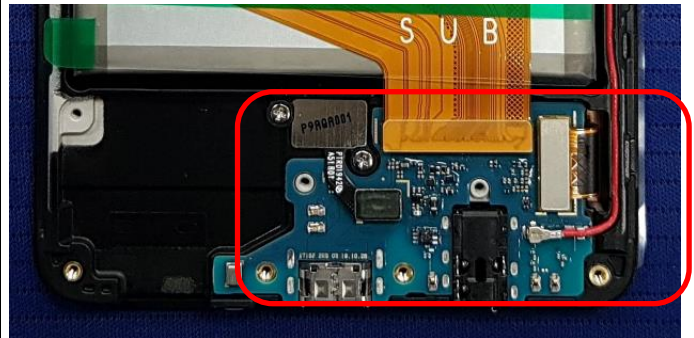
Attach SPK on Rear Ass'y.



※ **Caution**  
Be care of SPK damage.

2

Attach Sub PBA on Front Ass'y.



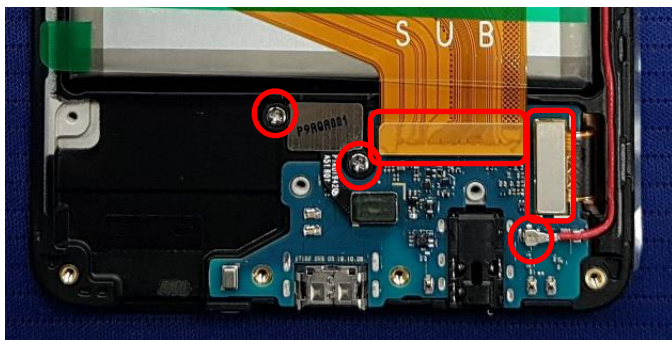
※ **Caution**  
Be care of Sub PBA damage.

3

Attach RF Cable 1ea and FPCB 2ea,  
fingersensor Screw 2ea&FPCB.

Screw insertion 2 Point.

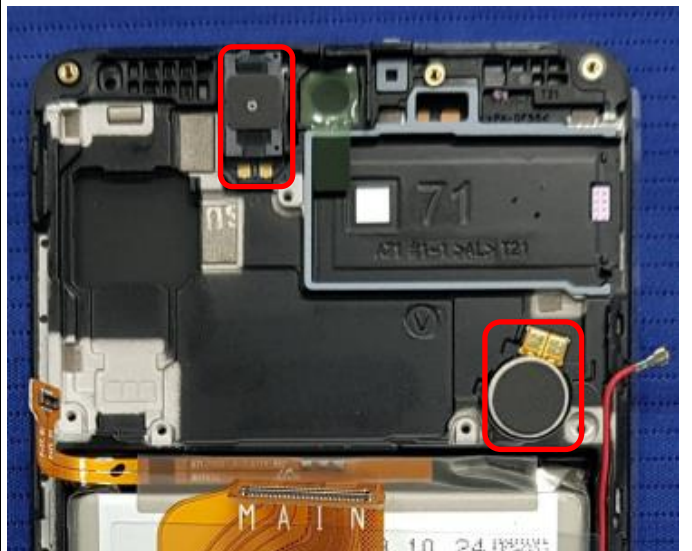
\* Torque Value : 0.95kgf



※ **Caution**  
Please keep the guide line for C to C FPCB  
and BLACK ,WHITE COAXIAL CABLE.

4

Attach Motor and Receiver in upper area



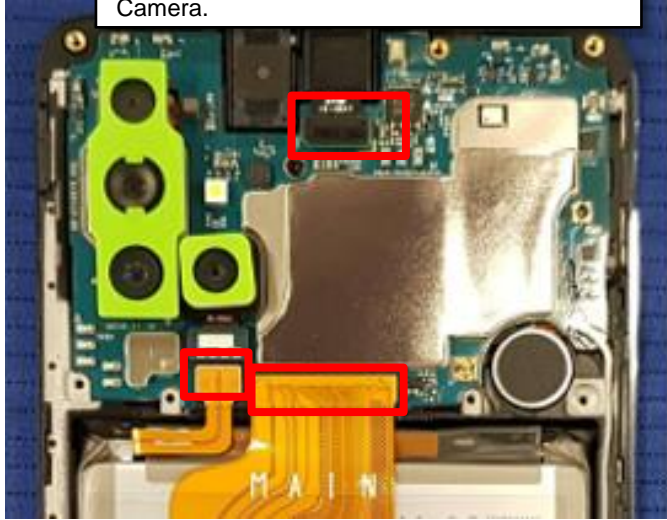
※ **Caution**  
1) Be care of scratch CAM lens  
2) Be care of damage each part.



## 7. Level 2 Repair

5

Assemble the PBA and C to C FPCB 2ea and Batter Conn and COAXIAL CABLE and VT Camera.



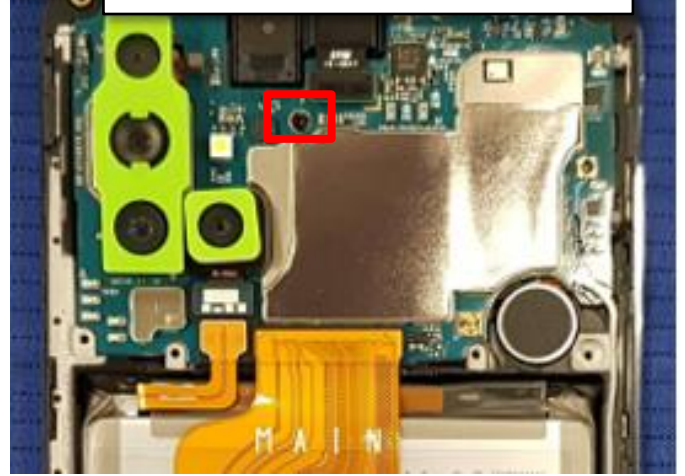
※ Caution

Check for each connector connection.

6

Screw insertion 1 Point.

\* Torque Value :  $0.95 \pm 7\%$



※ Caution

Be care of PBA damage.

7

Assemble Rear and screw insertion 14 point

\* Torque Value : 1.25kgf



※ Caution

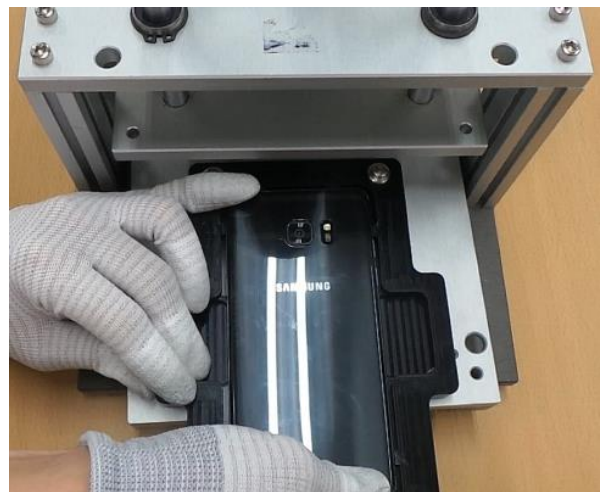
Be care of PBA damage.

8

Press Back Glass.

Pressing force : 1 N

Pressing time : 1 minute



※ Caution

Be care of scratch Rear cover.